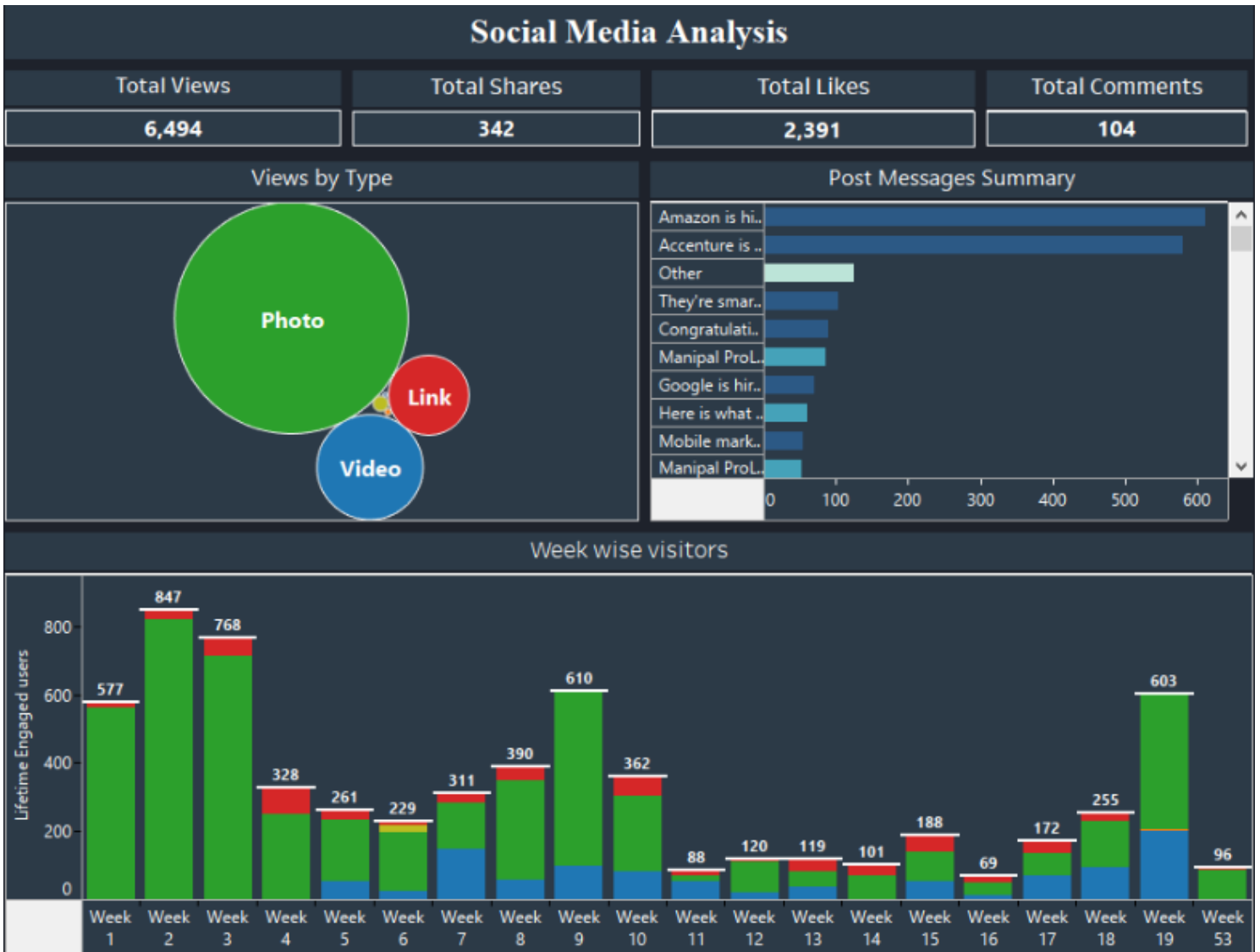
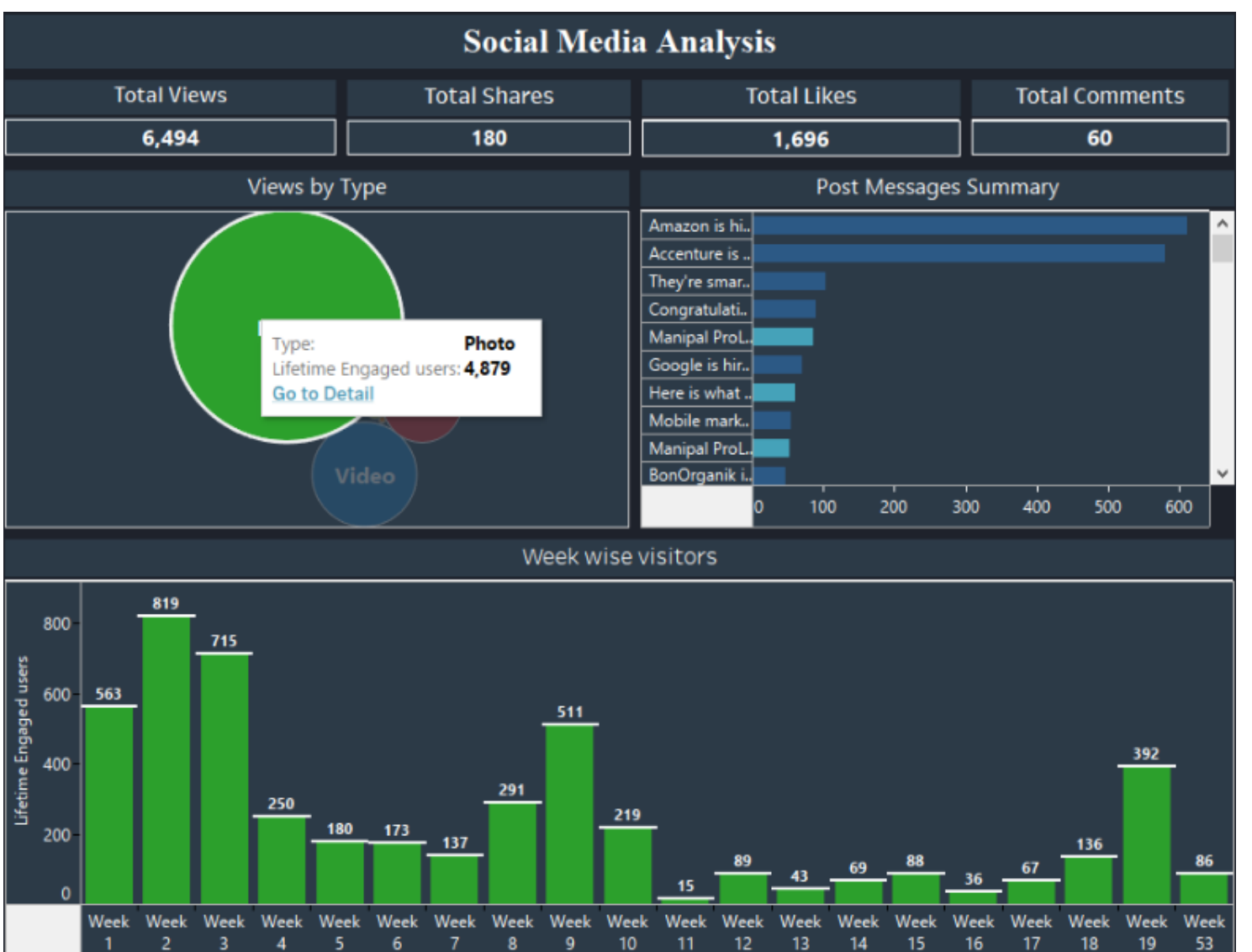


BIZ VIZ – Your visualization lookbook!

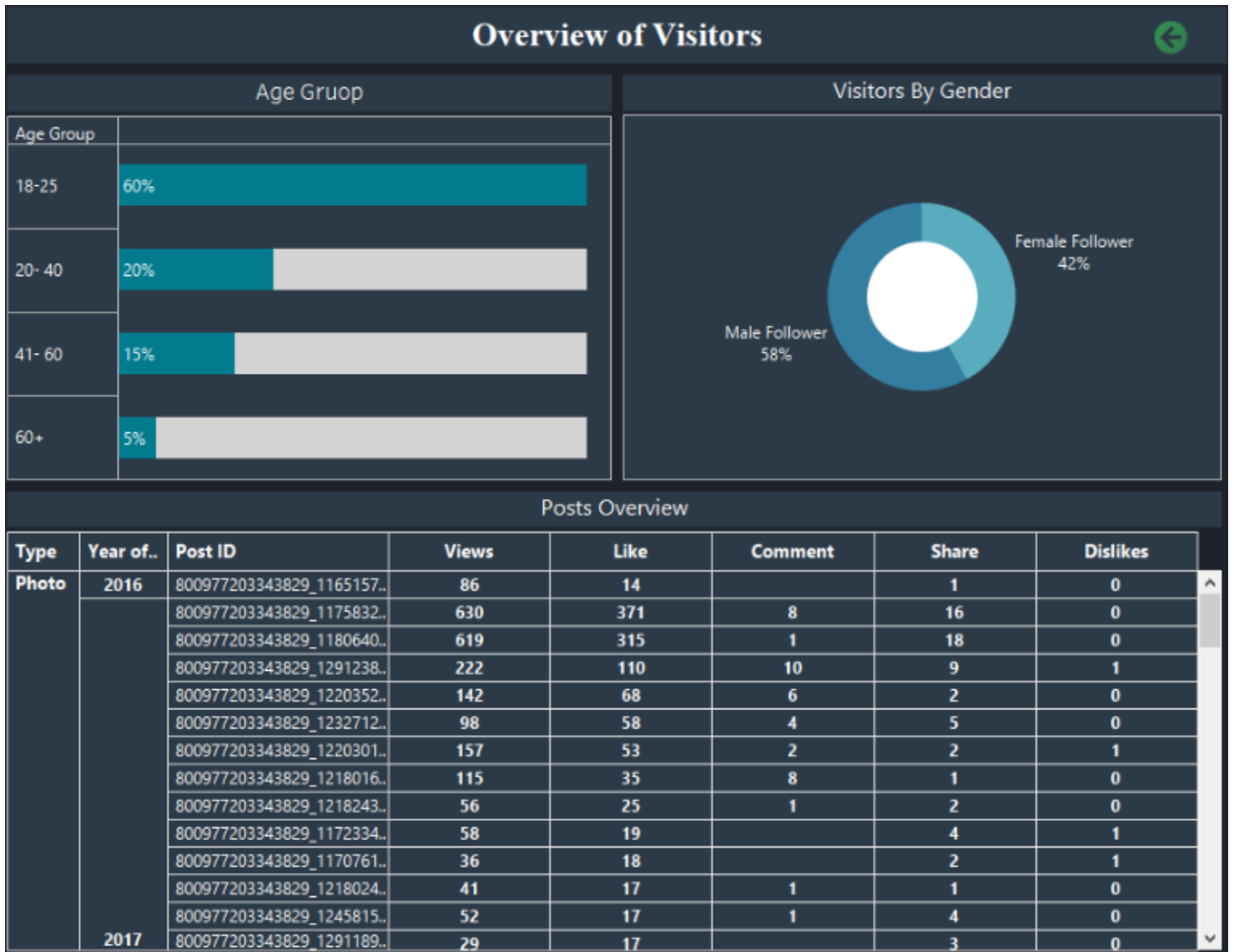


Here, the visualization is giving us the overview of a Facebook Page, which helps to track the count of visitor on a weekly or daily bases and the summary of view types.

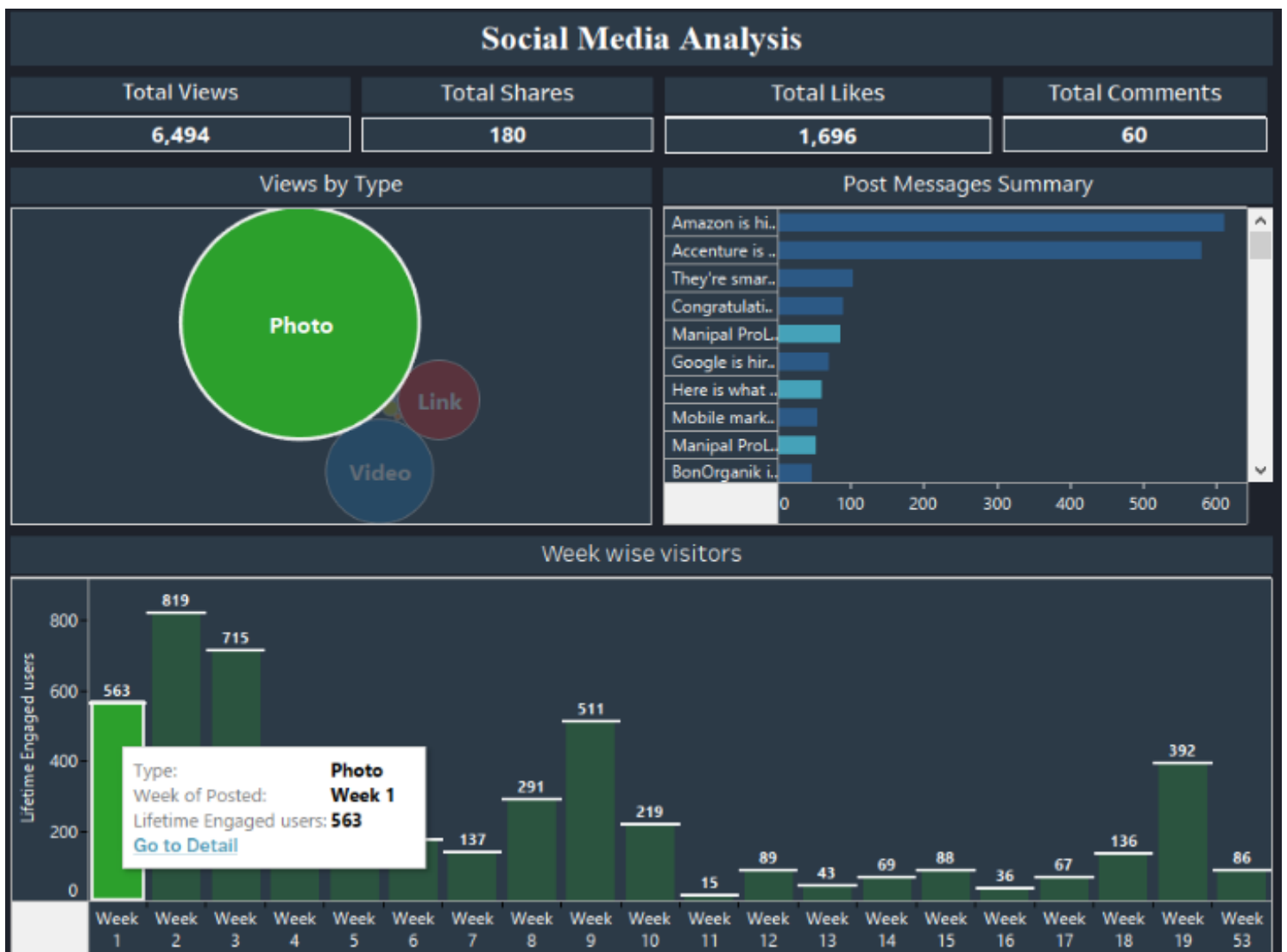
Selecting a particular view type (Ex. Photo), will further change the dashboard and will only provide the summary for that particular view type, in terms of number of Likes, Share, Comment and Total View.



Further selecting, one can drill down to the level, where they can track the number of visitor based on their Gender and Age group and the Post summary.

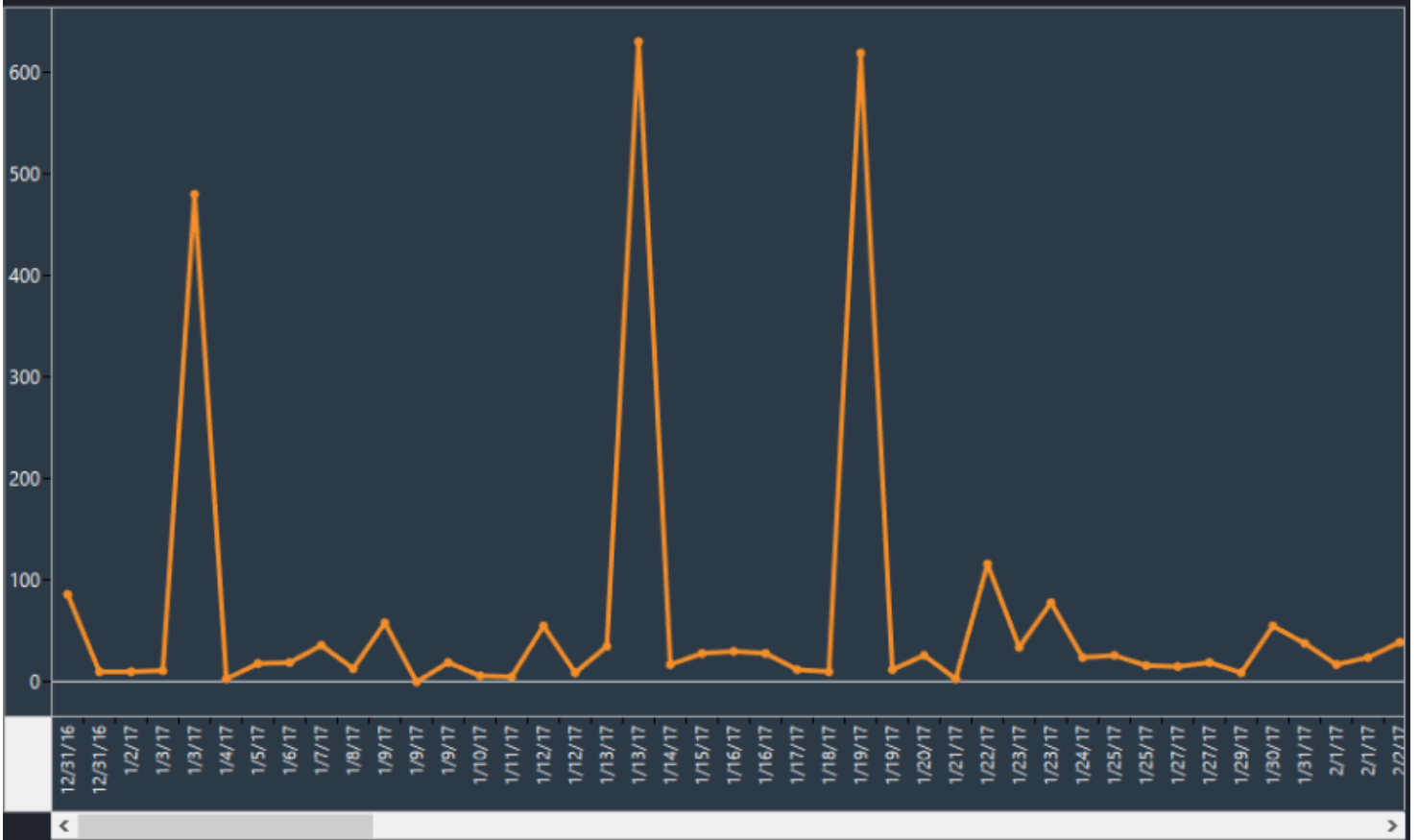


Further clicking onto the back icon, one will be navigated to the Home page from where we can further drill down to get a detail at a day level.



Further clicking onto the Week, will help to track the number of visitor on a daily basis.

Day wise Visitors



WEB DATA CONNECTOR

This visualization is created by fetching the data from Facebook by using Web Data connector.

A web data connector is an HTML file that includes JavaScript code. You can create your own web data connector or use one that has been created by someone else. The web data connector must be hosted on a web server running locally on your computer, on a third-party web server, or on Tableau Server.

How to connect Web Data source

https://onlinehelp.tableau.com/current/pro/desktop/en-us/examples_web_data_connector.html#Connect

Facebook Web Data Connector

<http://tableaujunkie.com/post/123558558693/facebook-web-data-connector>

How to use a web data connector on Tableau Server and Tableau Online

https://onlinehelp.tableau.com/current/pro/desktop/en-us/examples_web_data_connector.html#Imported