

**Working with default labels on a line chart**

When we build a Line Chart in Tableau and select 'Show Mark Labels to Line Ends', by default, Labels are shown as in below figure 1. Generally users want to see Labels next to relevant Lines as shown in below figure 2 and not overlapping.

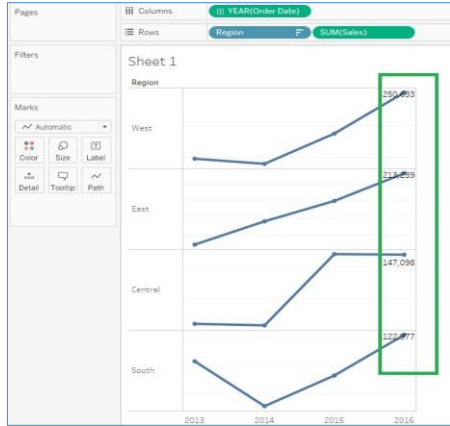


Fig (1)

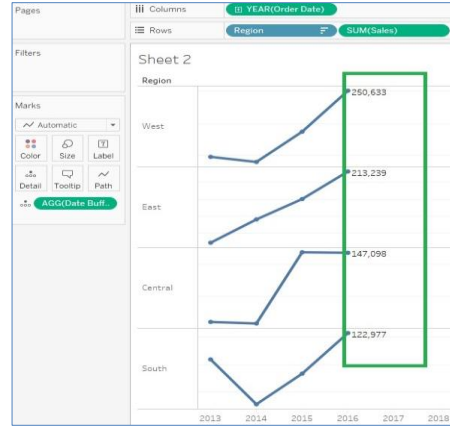


Fig (2)

**Steps to be followed -**

1. Create a calculated field with below calculation and name Date Buffer.  
DATEADD('year',1,MAX([Order Date]))
2. Now right click on the field Date Buffer and select option Convert to Continuous as shown in below figure 3.

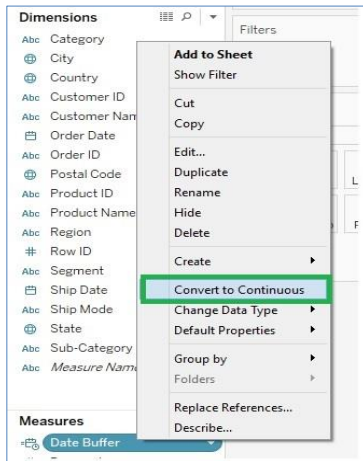


Fig (3)

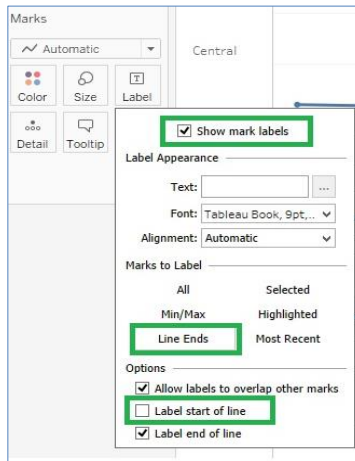


Fig (4)

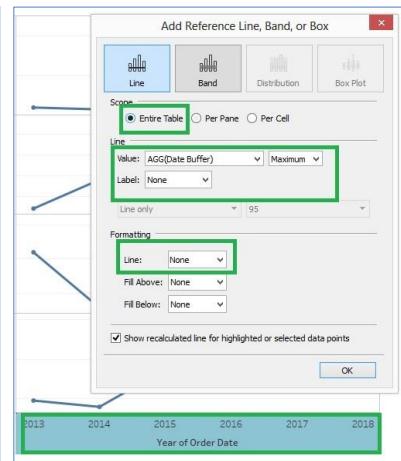


Fig (5)

3. Now change data type of Date Buffer field from Date & Time to Date.
4. Select Label options on the Marks card as shown in figure 4.
5. Now Drag and drop Date Buffer field on to detail shelf on Marks card. Right click on the year of order date axis and select Add Reference Line option and fill as shown in figure 5.