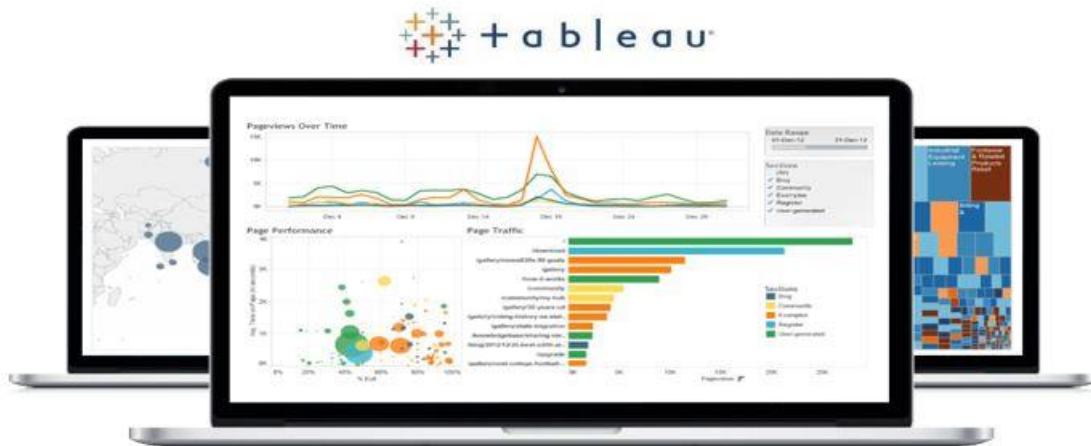


Goldstone Analytics Bulletin



Connect OBIEE and Tableau for the best of both worlds

Unify is the easiest and most efficient method to pull your OBIEE reporting data directly into your local Tableau environment. No longer will you have to worry about database connection credentials, Excel exports, or any other roundabout way to get your data where you need it to be.

Unify leverages OBIEE's existing metadata layer to provide quick access to your curated data through a standard Tableau Web Data Connector. After a short installation and configuration process, you can be building Tableau workbooks from your OBIEE data in minutes. [Read More](#)

How Big Data Is Shaking Up the Manufacturing Supply Chain



When companies leverage big data to understand their operational efficiencies, profitability and corporate responsibility improves. At this point, it's no surprise to anyone that big data and connected technologies—such as machine learning, predictive analytics, and artificial intelligence—are incredibly disruptive. This is true for nearly every industry in existence, and it's a good thing.

In July 2014, McKinsey and Company, a prominent analysis firm, published a report titled “**How Big Data Can Improve Manufacturing,**” and it takes a direct look at how the technology is changing the current landscape.

64% of supply chain execs feel that big data analytics is both important and disruptive and that it will build a foundation for long-term change in their organizations. [Read More](#)

Track Academic Performance with Tableau



NGEE ANN
POLYTECHNIC



Ngee Ann Polytechnic in Singapore has been exploring Tableau's visual analytics platform to model data on their students' academic performance and learning profiles from across its schools and gain insights.

“From looking at those data, we are able to better understand how our students perform,” says Lim Shee Chee, Course Chair (Business Information Technology) and Senior Lecturer, School of Business & Accountancy.

This becomes particularly important as the Ministry of Education is encouraging more Institute of Technical Education (ITE) students to further their training through the polytechnic system, he said. In recent years, as more students are admitted into the polytechnic via the Early Admissions Exercise, it would also be interesting to gain insights into their performance vis-à-vis those who are admitted via the Joint Admissions Exercise, Lim adds. [Read More](#)

"Science is the great antidote to the poison of the enthusiasm and superstition"

- Adam Smith, Scottish economist, philosopher and author



Industry Watch:

India's near \$167 billion IT services industry is expected to grow 7-9 %in the next financial year, said industry body National Association of Software & Services Companies. [Read More](#)



Copyright © 2018 Goldstone Technologies, All rights reserved.

All About Analytics!

Our mailing address is:

Goldstone Technologies
GNR's Insignia Building, 2nd Floor,
Image Garden Road, Madhapur
Hyderabad 500081
India

[Add us to your address book](#)

Want to change how you receive these emails?
You can [update your preferences](#) or [unsubscribe from this list](#).

MailChimp